

DIGITAL CAMERA FinePix S2 Pro



Quick Start Guide

We've prepared this Quick Start Guide to help you get your camera ready to shoot, and to orient you to the camera's basic functions.

Any Questions?

please visit www.fujifilm.com

or call FUJIFILM Information 1-800-800-FUJIFILM
FUJIFILM PHOTO FILM U.S.A., INC.

CFS# FJZ0SMS2



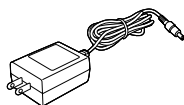
Congratulations!

On your purchase of the Fuji FinePix S2 camera. We know you want to get started using your new camera as quickly as possible, so we've prepared this Quick Start Guide to help you get your camera ready to shoot, and to orient you to the camera's basic functions. A 10-minute commitment on your part to study this document while following along with your camera, will help you to be productive sooner.

Along with this Quick Start Guide, you should have found the following items in the box:



FinePix S2 Pro Camera Body



AC Power Adapter (USA Package)

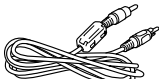


Interface Set

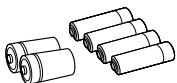
- CD-ROM: Application and Driver Software
- USB Driver
- FinePix Viewer
- Video Impression
- Adobe Photoshop® Elements
- Apple QuickTime 5.0®
- Raw File Converter LE
- 16-Bit Raw File Converter Software (USA Package)
- FinePix S2 Camera Shooting Software (USA Package)



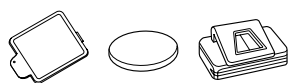
Shoulder Strap



USB, FireWire, and Video Cables



4 AA and 2 CR123A Batteries



Eyepiece Cap, Body Cap, and LCD Cover

Set-up Instructions

Prepare the Camera

1. Insert the Batteries.

The Fuji FinePix S2 uses two sets of batteries.

The first battery set is four AA alkaline batteries, which provide the main power to the digital aspects of the camera.

To install these batteries, fold out the handle at the lower left side of the camera (Fig. 1) and turn it from the **CLOSE** to **OPEN** position. The battery holder should pop out slightly from the camera. Pull the holder completely out of the camera.

Install the batteries as indicated by the etched markings in the battery holder (Fig. 2).

Push the battery holder back into the camera and turn the handle to the **CLOSE** position. Fold the handle back snug against the body.

The second set of batteries is two CR123A lithium batteries, which provide additional power to the camera and the main power for the flash.

To install these batteries, pull the small indented tab on the battery lid at the bottom of the camera towards the tripod socket. The lid should pop up.

Install the batteries as indicated by the decal inside the chamber (Fig. 3). Push the lid closed. It should snap shut.



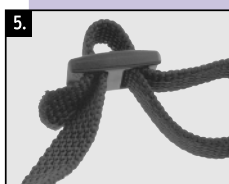
2. Put on the Strap.

Thread the supplied strap through the mounting brackets at the left and right side of the camera.

To secure the strap, first thread each loose end back through the small black retainer ring (Fig. 4).

Next, make sure to thread each loose end through the buckle (Fig. 5). You may have to move the buckle down the strap in order to do this.

Note: If each end of the strap isn't threaded correctly through both the retainer ring and buckle, the strap isn't secure! You should be able to tug very hard on the strap and not have it slip if you do this correctly.



3. Mount a Lens.

Remove the white body cap from the lens opening on the front of the camera (it should easily lift off).

Remove the rear lens cap from your lens, exposing its lens mount.

Orient the lens so that the white line aperture indicator aligns with the white dot on the camera body (Fig. 6). Turn the lens counterclockwise in the mount. After the lens turns about 15 degrees, you should feel (and hear) it click into place.

This operation shouldn't take excessive force! Be careful not to bend the aperture pin on the lens mount.



4. Insert a Storage Card.

If this is the first time you've used a lens on a Fuji or Nikon body, make sure that the aperture ring on the lens is set to the smallest aperture (the highest number, usually f/22). To use the most automated camera operations, the lens must be set to this position. Most Nikon lenses have a small tab that locks the lens at this aperture (Fig. 7).



At the lower right of the back of the camera there's a door that hides the SmartMedia™ and CompactFlash™ card slots. To open the door, the camera must be off. At the right edge of the door there's an interlock button that must be pulled down and towards you to open the door (Fig. 8). When the door opens the card slots are revealed.



The top slot is for SmartMedia™, the bottom for CompactFlash™ cards (either Type 1 or Type 2). SmartMedia™ cards insert with the gold connectors facing down. CompactFlash™ cards insert connector end first, with the label facing up. You'll meet with a slight resistance as the card engages with the camera. But if you can't get the card all the way in or you feel like you have to exert too much force, you probably have the card oriented wrong (Fig. 9).



Once the card is in the slot, close the door.

5. Focus the Viewfinder.

The Fuji FinePix S2 has an adjustable viewfinder to correct for differences in vision between users. Just to the right of the viewfinder there's a small bar that can be moved up and down (Fig. 10).

Take the lens cap off the lens. Look through the viewfinder at the black etchings on the viewfinder. If they are not in focus (don't worry about the scene itself), move the bar until they are. Most nearsighted users who have fully or mostly corrected vision will probably find that they need to move the bar partially downwards.



Note: If you can't get the viewfinder markings fully in focus, you may need to purchase an optional correction lens for the viewfinder. The one supplied with the camera works well for corrected vision and modest deviations, but if you are very farsighted or nearsighted, it may not provide enough adjustment.

At this point, you could begin shooting photos with the camera. Before you do, we want to introduce you to and have you verify the camera settings.

Make Important Camera Settings

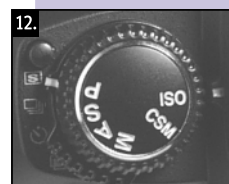
6. Turn the Camera On.

Turn the dial that surrounds the shutter release to the **ON** position (Fig. 11). The black and white LCDs should both begin showing icons, and the orange light above the storage card access door should come on briefly.



7. Set an ISO Value.

The default value is **100**. If you'd like to change that, turn the mode dial on the top left of the camera to **ISO** (Fig. 12), then use the rear command dial to change settings. The value in the top LCD changes as you turn the rear Command Dial (Fig. 13).



8. Make your Primary Digital Settings.

Press the **FUNC** button on the back of the camera (Fig. 14) to see the digital settings on the small LCD on the back of the camera (if the LCD appears blank, partially press the shutter release to activate the camera—the camera uses aggressive power management to preserve battery power).

The four buttons under the LCD control white balance, autofocus method, file type, and file size (represented by the icons immediately above each button, respectively). Pressing a button changes the indicated setting.

To set white balance, press the first (leftmost) button repeatedly until you see that the icon above it is set to **AUTO**. Press the third button until



you see that the camera is set to **F (Fine) PEG**. Press the last button until the icon displays **4256**. Your camera is now set to shoot at the highest resolution and respond automatically to changes in lighting color.

If you press the **FUNC** button a second time, you get another four digital settings (Fig. 15): Color, Tone, Sharpening, and Lock. Starting out just leave these to **STD**, **STD**, **STD**, and **OFF**.

Former S1 users should note the Lock function. Locking your settings wasn't possible on that camera.



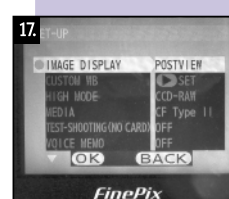
9. Review the Set-up Menu.

Press the **MENU/OK** button on the back of the camera (Fig. 16); the color LCD should activate (if it doesn't, partially press the shutter release to wake up the camera and press the **MENU/OK** button again). With this menu system (Fig. 17), you use the direction keys on the autofocus sensor pad to navigate, and the two buttons diagonal to that pad (**BACK** and **MENU/OK**) to make or cancel settings.

Note: if the autofocus sensor pad controls don't seem to work, make sure that they haven't been locked. Just to the right of the pad you should see a lever and a small white dot under it. If instead you see an L just above the lever, the pad is locked! To unlock it, move the lever to its other position.

You'll want to set the **IMAGE DISPLAY** option to **PREVIEW**. This setting displays the photograph on the color LCD immediately after taking it, and gives you a chance to review it (you can delete or save the image). The menu should come up with **IMAGE DISPLAY** selected, so all you have to do is press the right direction key on the autofocus sensor pad until you see **PREVIEW** is selected as the setting.

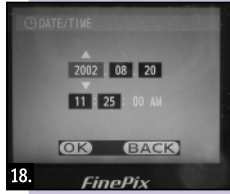
Press the down direction key on the autofocus sensor pad to navigate to the other options. Make sure **MEDIA** corresponds to the type of card you put in the camera.



Continue navigating downwards on the menu until you come to **LANGUAGE**. (The menu scrolls, so you won't see this option immediately. Press the down key until you do.) If you want to set a different language (English, French, German, and Japanese are the choices), use the right direction key until the language you want is selected. Note that the language is changed immediately, so don't leave this option without setting a language you understand!

Finally, you need to set the date and time, so navigate down to **DATE/TIME**, press the right direction key to get to the setting area (Fig. 18). Now use the up and down keys to increment or decrement a date/time value, the right and left keys to move between date and time values. When you've got the date and time set, press the MENU/OK button to confirm your setting.

Press the MENU/OK button to turn off the color LCD menu system.



18.

You're real close now. All we have to do is introduce you to the basic camera shooting controls and you'll be popping off photos like your neighborhood paparazzi.

Set Camera Shooting Controls

10. Pick an Exposure Mode.

Turn the **Mode** dial on the left top of the camera to one of the four exposure modes: **P**, **S**, **A**, or **M**. These stand for Program, Shutter-priority, Aperture-priority, and Manual, respectively. For your first shooting session, pick **P** (Program) (Fig. 19). In this exposure mode, the camera chooses both the shutter speed and aperture. If you don't like what the camera picks, change it by twirling the rear command dial and the camera picks another valid combination!



19.

11. Verify the Motor Drive Mode.

Surrounding the **Mode** dial is the Motor Drive selector. Hold down the button at the front left top edge of the camera and move the small lever that sticks out the back of the **Mode** dial until you've selected the motor drive option you want. From top to bottom, your choices are Single shot, Continuous, Self Timer, and Multiple Exposure. If it isn't already selected, choose Single shot (Fig. 20).



20.

12. Set a Metering Method.

Just to the right of the viewfinder is a selector switch with a button in the middle of it. Move that switch to the icon that corresponds to the metering method you want. From top to bottom, these icons represent Center-weighted (dot with brackets), Matrix (five segment pattern), and Spot (single dot) metering.

Unless you have a reason to do otherwise, choose Matrix metering (Fig. 21).



21.

13. Verify the Autofocus Mode.

The Fuji FinePix S2 has several different autofocus controls, but the one we want you to set in this instruction is on the front of the camera, just below the lens release button (Fig. 22). Move this lever so that **S** (single servo autofocus) is selected. In this mode, the camera will not take a picture unless focus is achieved. More important, it'll allow the autofocus help light and flash to work.



22.

Okay, we promised you that you'd be taking pictures in 10 minutes, and that's exactly what you're ready to do. So go ahead, take some pictures!

Add Flash

14. Pop Up the Flash

Press the small button on the left front side of the viewfinder prism (Fig. 23) and the flash should pop up.

Note: We're assuming that you haven't changed any of the other settings on the camera you made earlier in the Quick Start Guide. Flash use can get somewhat complex, but if you've followed the instructions so far, you're ready to shoot in the simplest, most automatic flash mode (Fig. 24).



23.

15. Take a Picture!

As long as the flash is popped up, the camera will take pictures using advanced balanced fill flash methods.

To cancel flash, just push the flash back down into its closed position. It should snap into place when you do so.



24.

Reviewing Photos

16. Look at the Pictures You've Taken.

Press the **PLAY** button. The most recently saved photo should appear on the color LCD. The four buttons below the small B&W LCD allow you to (from left to right) display a histogram, delete the image, protect the image, or display multiple images on color LCD simultaneously.

You move between images by pressing the left and right keys on the autofocus sensor direction pad, and pressing the up and down keys on the pad allow you to zoom in and out on the current picture.

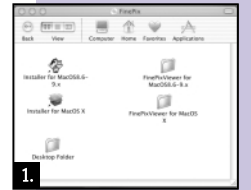
That's it, you're locked and loaded and ready for a digital photography adventure. You can continue to use your Fuji FinePix S2 in the all-automatic mode we've had you set it to, or you can start exploring the many options this camera provides to make your picture taking better and more memorable, as described in the User Manual.

Installing Software (Macintosh)

1. Insert the FinePix Viewer CD.

Put the FinePix Viewer CD into your Mac's CD-ROM or DVD drive.

Double-click on the icon for the CD when it appears on the desktop. You should see the installer icons displayed (screen shot 1).



1.

2. Start the Installer.

Double-click on the installer icon correct for your system (we'll use Mac OS X throughout the rest of this example, but the steps are similar for OS 8.x and OS 9.x users).

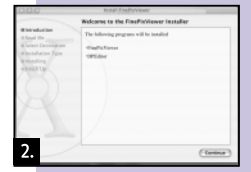
If you get a warning about needing an Administrative password, click on the lock icon and enter your Log In information.

The installer's Welcome screen should appear (screen shot 2). Click the Continue button.

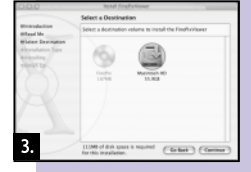
Read the instructions that appear! It's important to note that the camera should not be connected to the computer yet. Click the Continue button to acknowledge the instructions.

The installer next asks for a destination (screen shot 3). Click on a destination icon and then click the **Continue** button. Click the Install button that appears. Click the **OK** button when the computer warns that you'll need to restart after installation.

At the end of installation, you'll get a message from the installer. Click the **Restart** button.



2.



3.

3. Connect the Camera.

Plug one end of the supplied cable into your Macintosh, the other end into the IEEE 1394 connector on your camera.

The connectors are unique and can only be put into the correct sockets. **Note:** if iPhoto starts up, you can either use it to move photos from camera to computer, or dismiss it and use FinePix Viewer instead.

Start the FinePix Viewer software by double-clicking on it (depending upon how your system is set up, you may have to navigate to it. The program is stored in the Applications folder inside the FinePix Viewer folder). You should see an empty display (screen shot 4). The camera shows up as a storage device labeled "Unlabeled."



4.

4. Get Your Images

Click on the arrow next to Unlabeled to open it up. Click on the DCIM folder to open it, then open the 100_Fuji folder (or one of the other numbered folders if there are multiples). After a few moments, thumbnails of the photos in that folder should appear in the main portion of FinePix Viewer's window (screen shot 5).

At this point, you can perform any number of actions, including opening images for editing, printing, rotating, batch renaming, adding copyright information to every photo, e-mail the photos, and much, much more. Study the FinePix Viewer manual for more information.



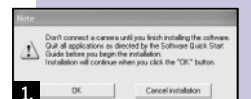
5.

Installing Software (Windows)

1. Insert the FinePix Viewer CD.

Put the FinePix Viewer CD into your PC's CD-ROM or DVD drive.

If it doesn't automatically start, double-click on the My Computer icon and then double-click on the icon for the CD in the list of drives that appears. Double-click on the SETUPEXE icon.



1.

2. Use the Installer.

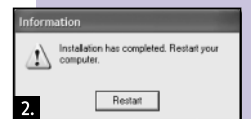
You'll see a dialog reminding you not to have your camera connected (screen shot 1). Click the OK button.

The main installer screen should appear. Click the button to the left of Install the FinePix Viewer item.

An **Information and Progress** window that tells you what the installer is doing appears in the upper left area of your display. You'll see multiple windows appear in the middle of your display as the various parts are installed.

Eventually, you'll get to the Viewer installer, which will ask you to confirm settings during the installation (just click on the Next buttons that appear if you accept the defaults).

At the end of installation, you'll get a message from the installer. Click the Restart button (screen shot 2).



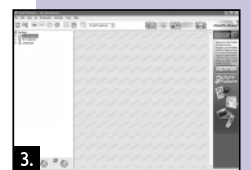
2.

3. Connect the Camera.

Plug one end of the supplied cable into your Macintosh, the other end into the IEEE 1394 connector on your camera.

The connectors are unique and can only be put into the correct sockets. **Note:** if iPhoto starts up, you can either use it to move photos from camera to computer, or dismiss it and use FinePix Viewer instead.

Start the FinePix Viewer software by double-clicking on it (depending upon how your system is set up, you may have to navigate to it. The program is stored in the Applications folder inside the FinePix Viewer folder). You should see an empty display (screen shot 3). The camera shows up as a storage device labeled "Unlabeled."



3.

4. Get Your Images

Click on the arrow next to Unlabeled to open it up. Click on the DCIM folder to open it, then open the 100_Fuji folder (or one of the other numbered folders if there are multiples). After a few moments, thumbnails of the photos in that folder should appear in the main portion of FinePix Viewer's window (screen shot 4).

At this point, you can perform any number of actions, including opening images for editing, printing, rotating, batch renaming, adding copyright information to every photo, e-mail the photos, and much, much more. Study the FinePix Viewer manual for more information.



4.