



- Handling precautions  
Camera's detailed operations  
→ *Camera User Guide*
- Software operations  
→ *Software Starter Guide*
- Detailed software operations  
→ *ZoomBrowser EX Software User Guide (Windows®)*  
→ *ImageBrowser Software User Guide (Macintosh)*  
(These PDF format manuals are available on the Canon website. Please download them from the following URL: <http://web.canon.jp/imaging/information-e.html>)

This guide explains the required operations the first time the camera is used, how to download images to a computer, as well as connecting to a printer for direct printing. For more information about handling precautions and detailed instructions, please refer to the manuals listed above.

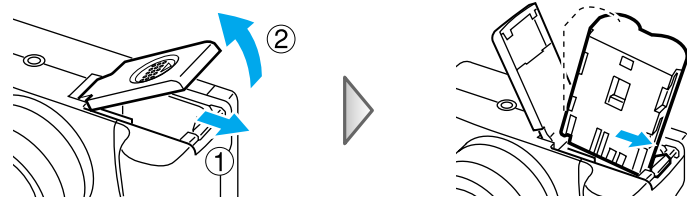
Please refer to the *Troubleshooting* section of the *Software Starter Guide* if you have trouble installing the software or downloading images.

Do not connect the camera to the computer before the software is installed.

## Step 1 Preparing the Camera

### 1. Install the battery pack.

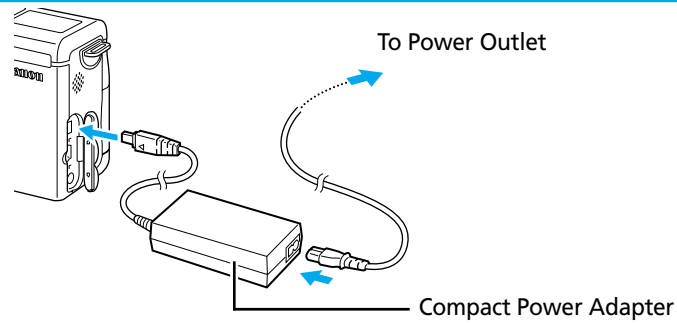
Slide the battery cover in the direction the arrows to open it. Press the battery lock while inserting the battery pack all the way in and close the battery cover.



### 2. Charge the battery pack.

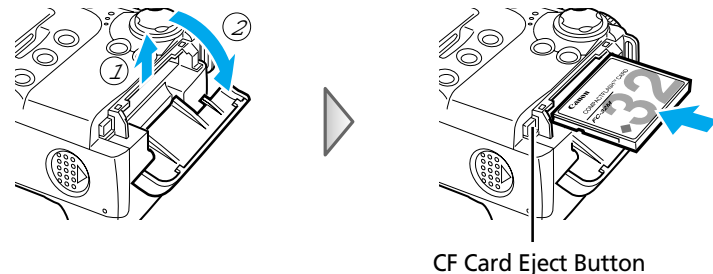
Connect the Compact Power Adapter to the camera as shown on the illustration. The indicator beside the viewfinder will blink orange while the battery pack is charging and will light steady once charging is complete.

- It takes approximately 80 minutes to charge the battery pack.
- Once charging is complete, disconnect the compact power adapter from the camera.



### 3. Install the CF card.

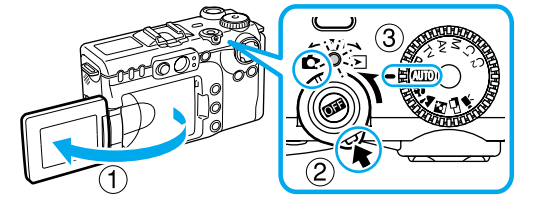
Slide the CF card slot cover in the direction of the arrow and lift it open. Insert the CF card with its label facing up until the CF card eject button fully extends and close the CF card slot cover.



## Step 2 Shooting

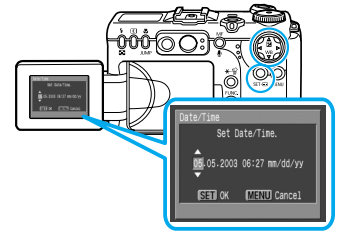
### 1. Open the LCD monitor, turn the mode lever to (shooting) while pressing the release button and turn the mode dial to **AUTO**.

The Power/Mode indicator lights orange.



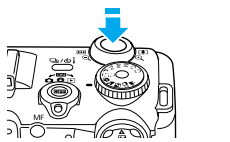
### 2. Set the date and time. (first time the camera is powered on)

Use the or arrow on the omni selector to select the items you wish to set, and use the or arrow on the omni selector to change the value. To put the settings into effect, press the **SET** button.



### 3. Focus.

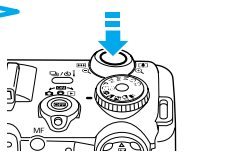
Point the camera in the direction of the subject you wish to shoot and press the shutter button halfway. The camera beeps twice when the subject is in focus.



### 4. Shoot.

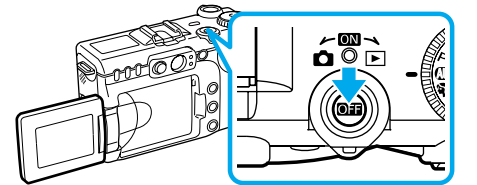
Press the shutter button fully. The shutter sound will sound once when the shot has been taken. The recorded image is displayed on the LCD monitor for approximately 2 seconds.

**Shutter Button**  
The shutter button features a two-stage action.



### Turn off the power.

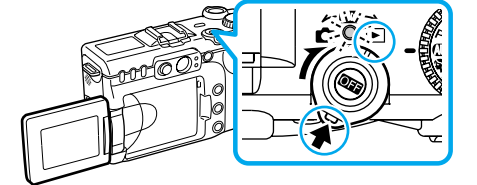
Press the **OFF** button. Even if you do not press the **OFF** button, the power will automatically shut down 3 minutes after the last control is accessed.



## Step 3 Reviewing an Image

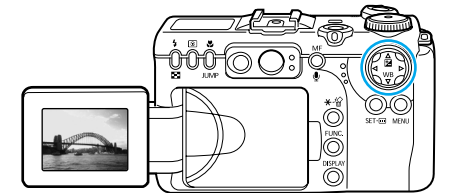
### 1. Turn the mode lever to while pressing the release button.

The power/mode indicator lights green. The last recorded image appears in the LCD monitor.



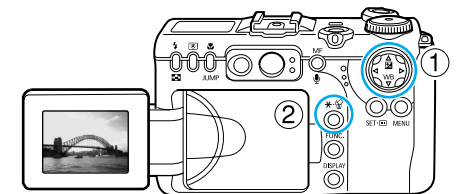
### 2. View the images.

Use the or arrow on the omni selector to display the image you wish to see.



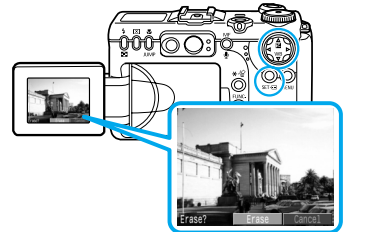
### To Delete an Unwanted Image

#### 1. Select the unwanted image using the or arrow on the omni selector and press the button.



#### 2. When the confirmation screen appears, check that [Erase] is selected and press the **SET** button.

Select [Cancel] using the or arrow on the omni selector to cancel without erasing.



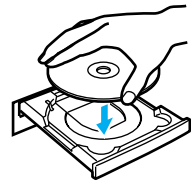
## Downloading Images to a Computer

Do not connect the camera to the computer before the software is installed. Follow each step below in order.

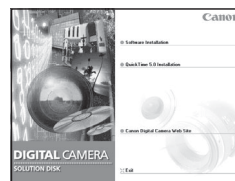
### List of Things to Prepare

- Camera and computer
- Canon Digital Camera Solution Disk provided with the camera
- USB cable (use the cable provided with the camera)

### Steps to Follow

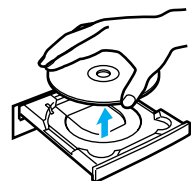


1. Set the Canon Digital Camera Solution Disk in the CD-ROM drive.

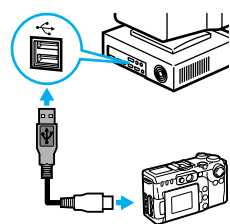


2. Install the software from the disk.

For details on software installation, see the *Software Starter Guide* included in your package.



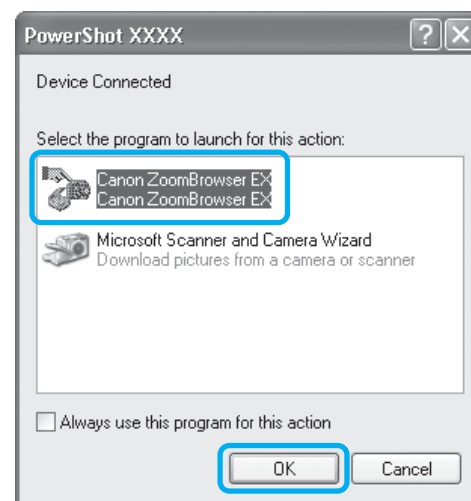
3. After your computer restarts, eject the Solution Disk from the CD-ROM drive.



4. Connect the camera to the computer using the USB cable.


5. Start the program.

- **Windows\*:** The Events dialog will automatically display.



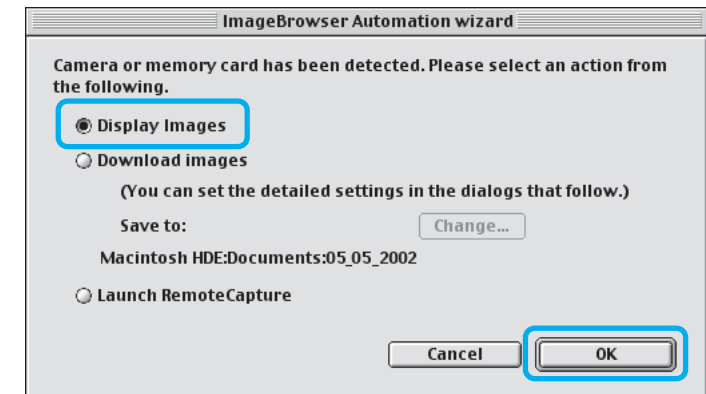
Select [Canon ZoomBrowser EX] and click [OK].

\* If the above dialog (Events dialog) does not appear automatically, double-click the [ZoomBrowser EX] icon on the desktop.

- **Mac OS X (v10.1/v10.2):**
  1. If Image Capture or iPhoto are running, click on  in the upper left corner of the window to close the application.
  2. Double-click the [Canon ImageBrowser] icon on the desktop.



- **Mac OS 9.0-9.2:** ImageBrowser will start and open the ImageBrowser Automation wizard.



Confirm that [Display Images] is selected and click the [OK] button.

6. Download images to the computer using the program you started.

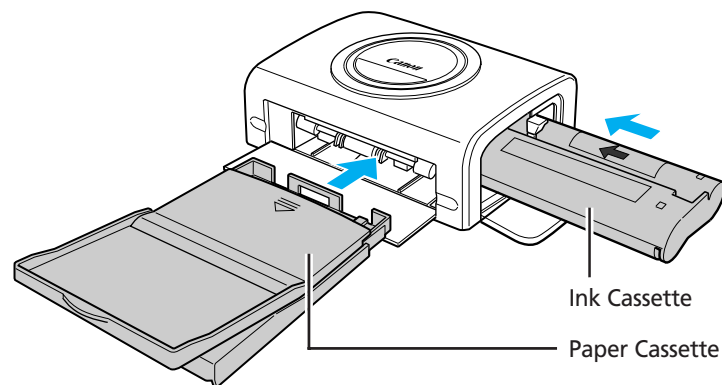
For details on downloading images, see the *Software Starter Guide* included in your package.

## Printing with a Direct Print Compatible Printer (CP Series)

It is easy to print out crisp prints of the images you shoot by connecting your camera directly to a separately sold, direct print compatible printer (CP series) with a cable. For details, please see the user guide for the printer.

You can also print with a separately sold, direct print compatible Bubble Jet printer. For details, please see the user guide included with the Bubble Jet printer.


1. Load the ink cassette and the paper cassette into the printer.

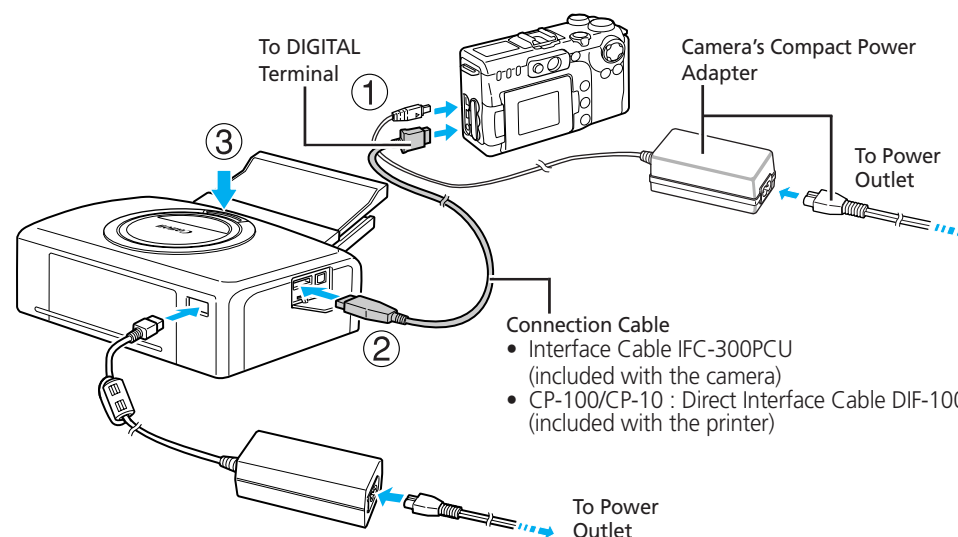


2. Connect the power cord to the printer.

With the printers that do not have an ON/OFF button, the printer's power turns on automatically.

3. Connect the camera to the printer and press the printer's ON/OFF button to turn on the power.

-  appears on the camera's LCD monitor and the power/mode indicator lights green.
- If you cannot use the camera's compact power adapter, please use a fully charged battery pack.

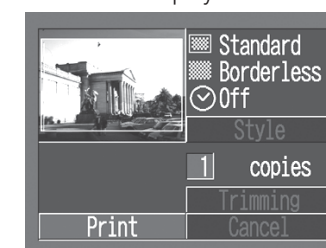


4. Choose an image using the ◀ or ▶ arrow on the omni selector and press the SET button.



5. Choose [Print] using the ◀, ▶, ▲ or ▼ arrow on the omni selector and press the SET button.

The image will start to print and, when it is completely finished, the display will revert to standard replay mode.



For details on printing images, see the *Camera User Guide* included in your package.