

Service Manual

Stereo Integrated Amplifier

Amplifier

SU-VX820



Colour

(K) Black Type

Areas

Suffix for Model No.	Area	Colour
(EB)	Great Britain.	(K)
(EG)	Europe	

SPECIFICATIONS (DIN 45 500)

■ MAIN AMP. SECTION (POWER AMP. DIRECT input)

20 Hz~20 kHz continuous power output both channels driven:	2×90 W (8Ω)
1 kHz continuous power output both channels driven (THD: 1%):	2×100 W (8Ω) 2×135 W (4Ω)
63 Hz~12.5 kHz continuous power output both channels driven (THD: 0.7%):	2×90 W (8Ω) 2×125 W (4Ω)
Total harmonic distortion rated power at 20 Hz~20 kHz:	0.007% (8Ω)
half power at 20 Hz~20 kHz:	0.005% (8Ω)
half power at 1 kHz:	0.0009% (8Ω) 0.002% (4Ω)
Intermodulation distortion (50 Hz: 7 kHz=4:1, SMPTE) rated power:	0.007% (8Ω)
Residual hum and noise:	0.2 mV
Damping factor:	80 (8Ω) 40 (4Ω)
Headphones output level/impedance:	635 mV/330Ω
Load impedance	
A or B, BI-WIRING:	4~16Ω
A and B:	8~16Ω

■ PRE AMP. SECTION

Input sensitivity/Impedance	
PHONO MM:	2.5 mV/47 kΩ
MC:	250 μV/220Ω
TUNER, CD, AUX, TAPE 1, TAPE 2/DAT:	150 mV/22 kΩ
POWER AMP. DIRECT:	1 V/18 kΩ
Phono maximum input voltage (1 kHz, RMS)	
MM:	170 mV
MC:	15 mV

S/N (Rated power, 4Ω)

PHONO MM:	79 dB (86 dB, IHF '66)
MC:	68 dB (68 dB, IHF '66)
TUNER, CD, AUX, TAPE 1, TAPE 2/DAT:	97 dB (100 dB, IHF '66) 106 dB (115 dB, IHF '66)

POWER AMP. DIRECT:

S/N at -26 dB power (4Ω)	
PHONO MM:	77 dB
MC:	67 dB
TUNER, CD, AUX, TAPE 1, TAPE 2/DAT:	84 dB
S/N at 50 mW power (4Ω)	
PHONO MM:	75 dB
MC:	67 dB
TUNER, CD, AUX, TAPE 1, TAPE 2/DAT:	78 dB

Frequency response

PHONO MM:	RIAA standard curve ±0.8 dB (30 Hz~15 kHz)
-----------	---

TUNER, CD, AUX, TAPE 1, TAPE 2/DAT:

	3 Hz~100 kHz (+0, -3 dB)
POWER AMP. DIRECT:	+0 dB, -0.2 dB (20 Hz~20 kHz) 3 Hz~120 kHz (+0, -3 dB) +0 dB, -0.2 dB (20 Hz~20 kHz)

Tone controls

BASS:	50 Hz, +10~-10 dB
TREBLE:	20 kHz, +10~-10 dB

Muting: -20 dB

Subsonic filter: 20 Hz, -12 dB/oct

Loudness control (volume at -30 dB): 50 Hz, +9 dB

Output voltage

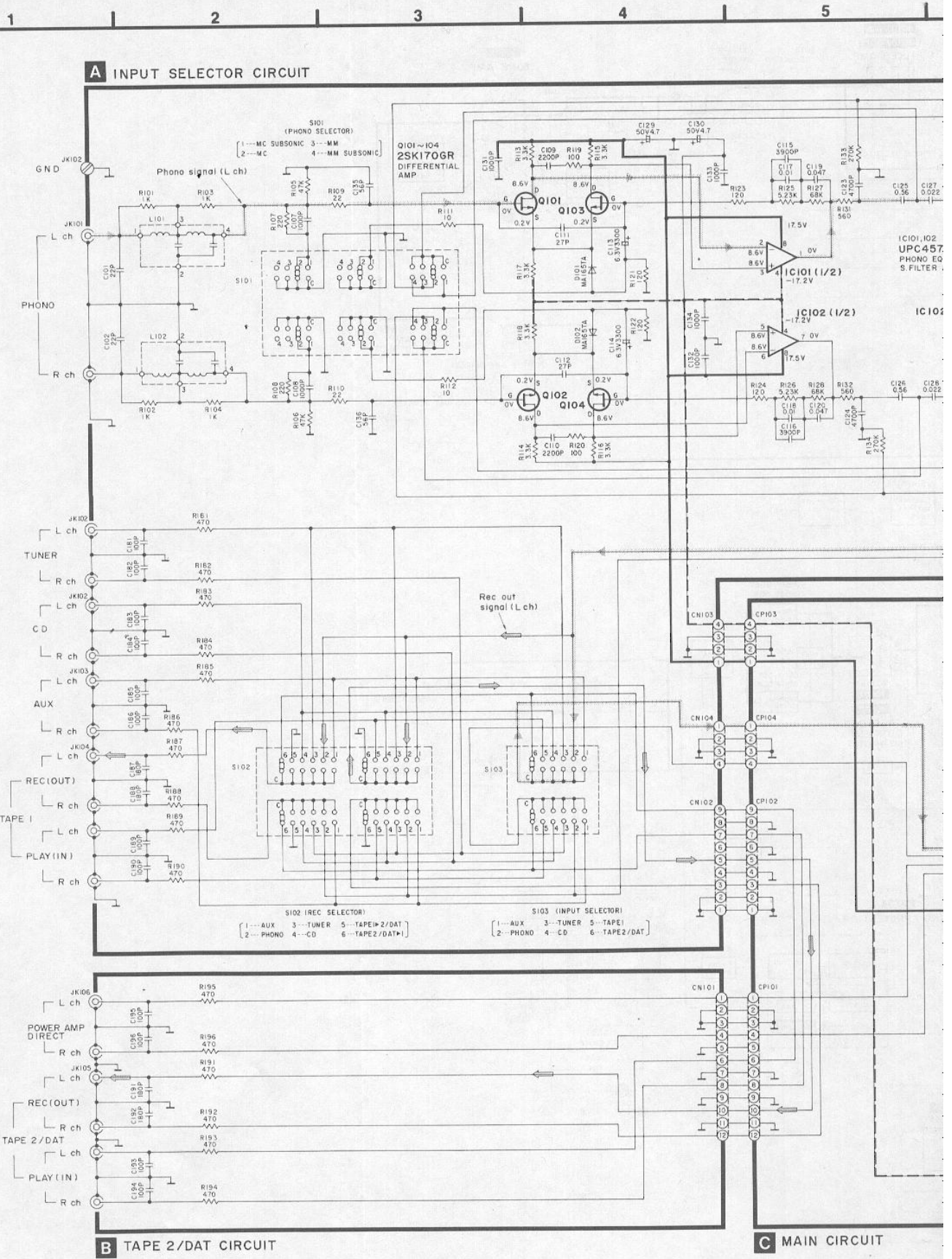
TAPE 1, TAPE 2/DAT REC OUT: 150 mV

Channel balance, (AUX 250 Hz~6.3 kHz): ±1 dB

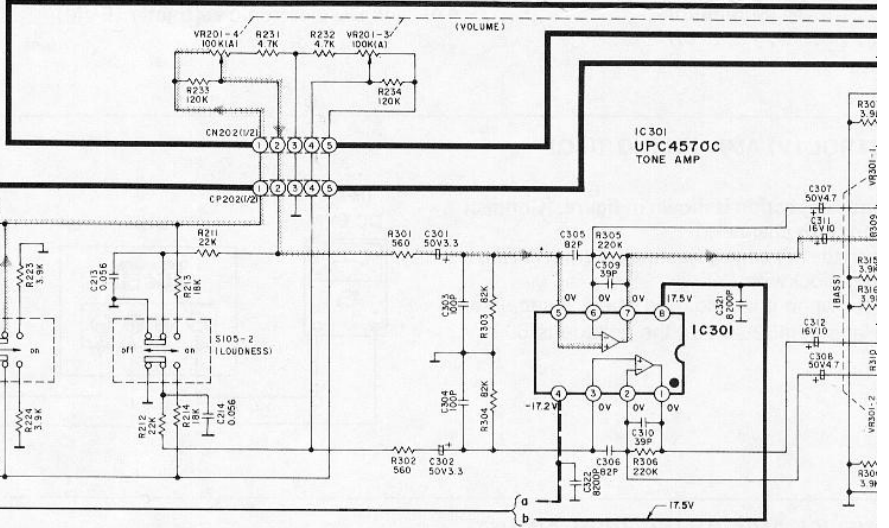
Channel separation (AUX 1 kHz): 50 dB

Technics

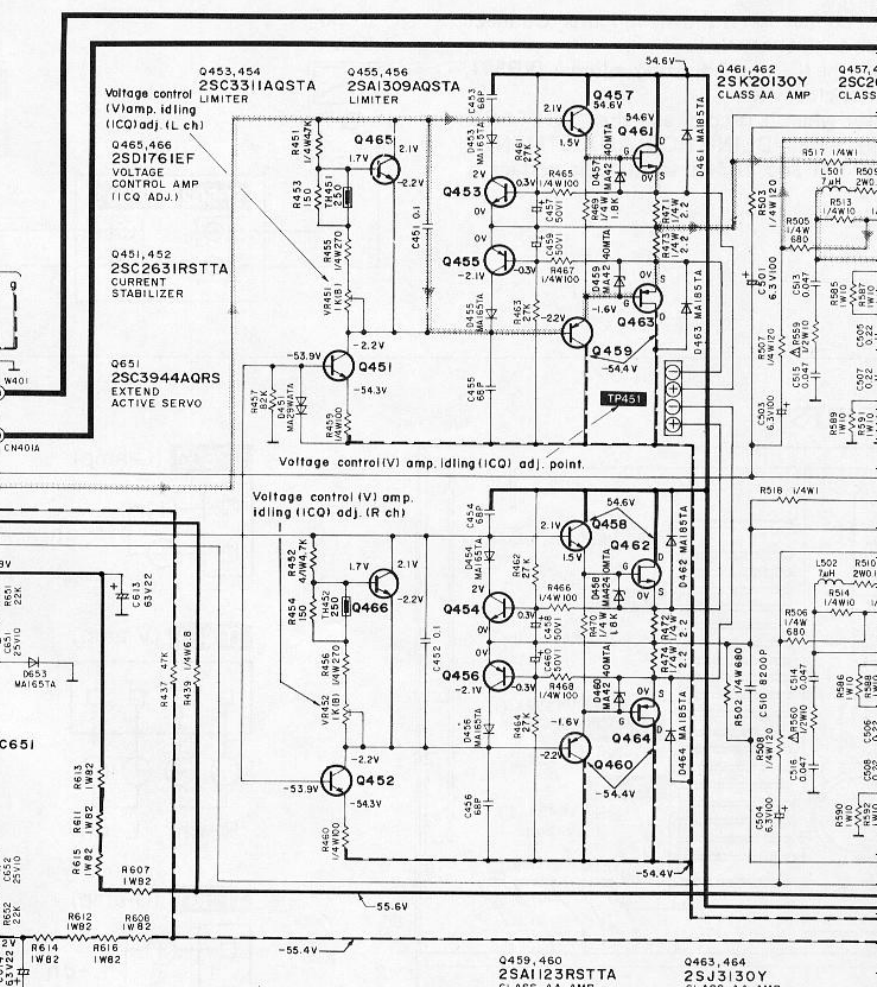
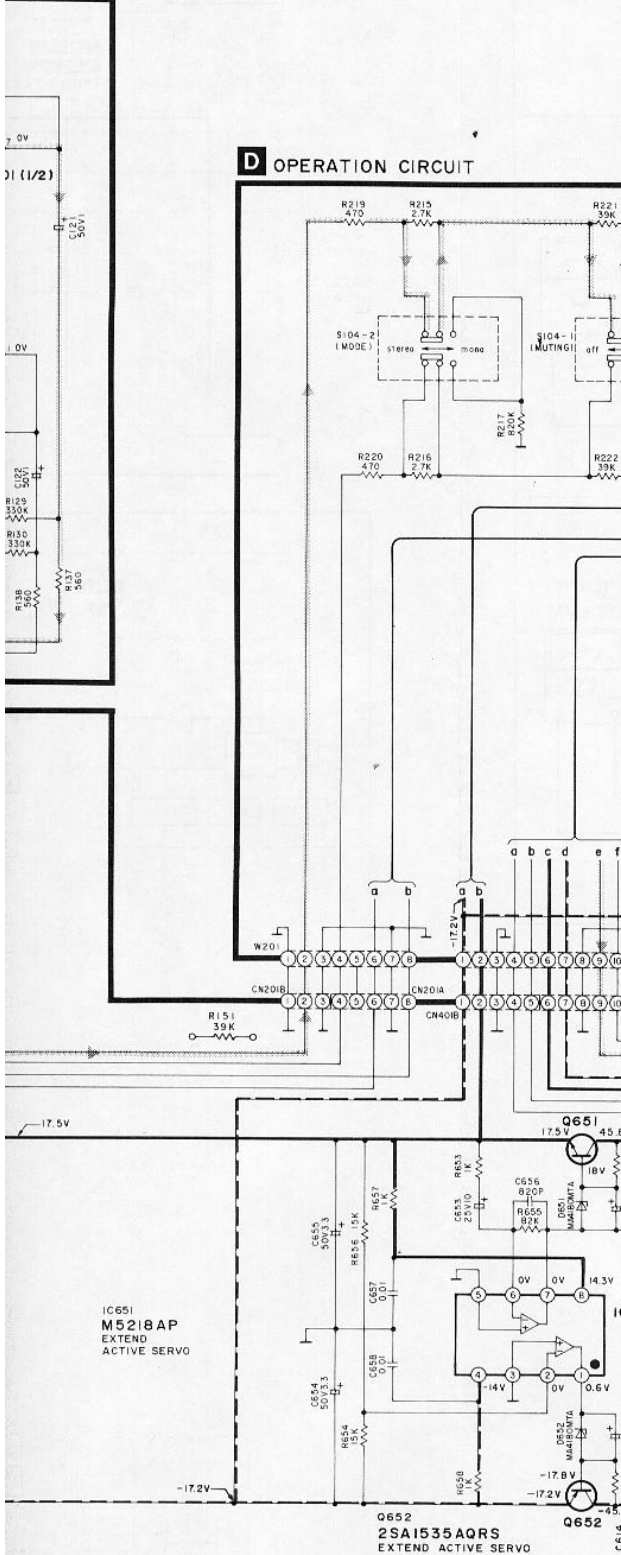
SCHEMATIC DIAGRAM (Parts list on pages 23-26.)

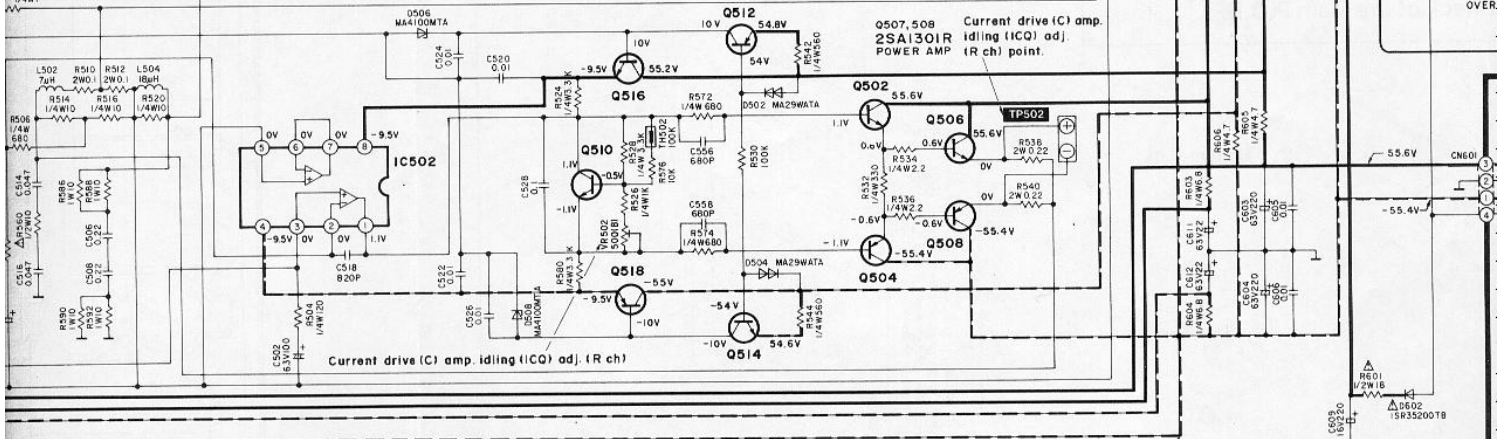
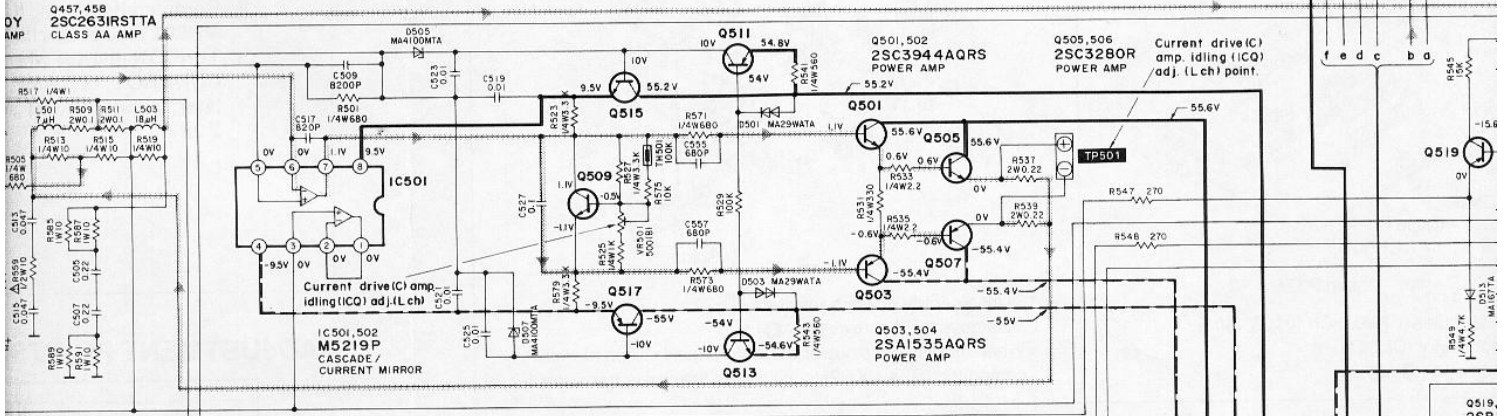
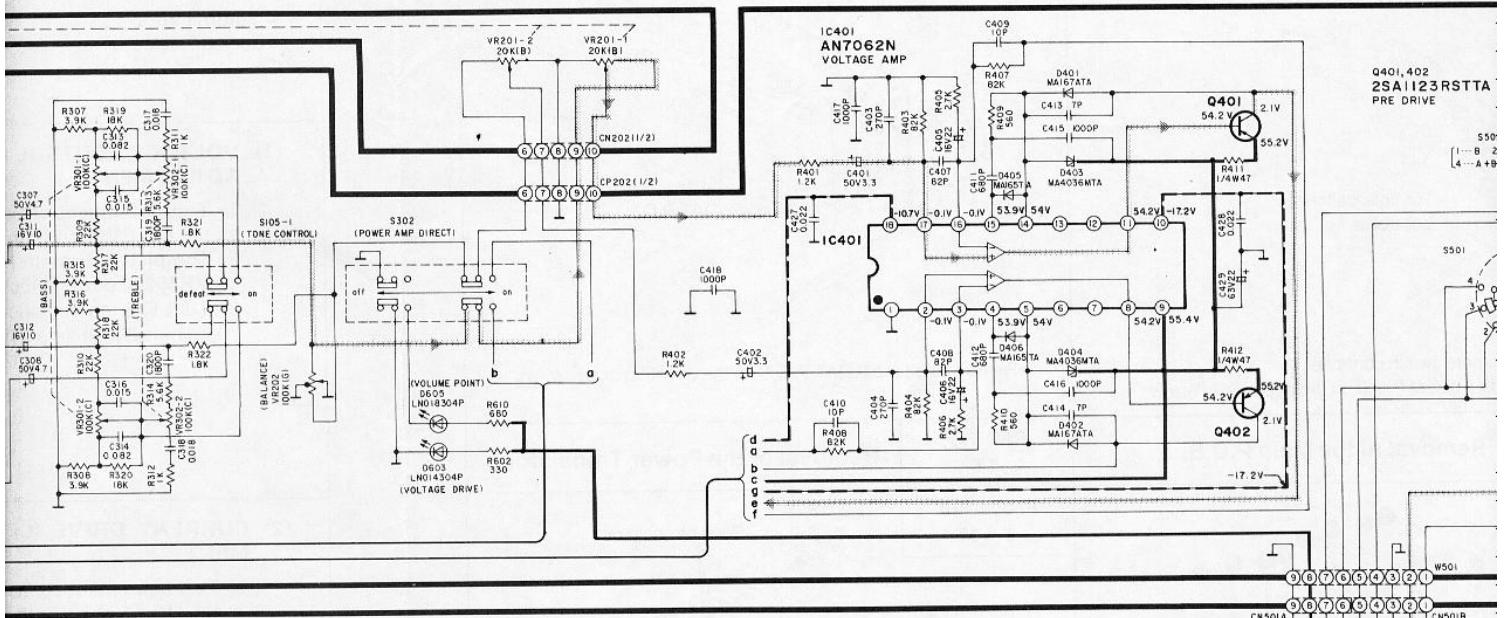


E VOLUME CIRCUIT



D OPERATION CIRCUIT



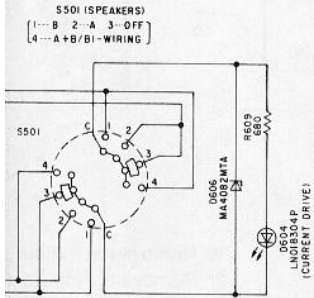


Q509, 510 2SC1815BGL CURRENT DRIVE (ICQ ADJ.)

Q511, 512, 517, 518 2SA1123RSTTA CONSTANT CURRENT LOAD

Q513~516 2SC2631RSTTA CONSTANT CURRENT LOAD

3RSTTA



#501

#501B

